



# NAYA

— DECORATIVE BUILDING MATERIALS —

NAYA



## Adds Color To Your Wonderful Life.

### Home Decoration Design

### 2015-2026

展厅地址：义乌市稠州北路1135号双创大厦1栋3楼311号

门店地址：义乌市国际商贸城二区2楼14418号(33号门中央大厅连接体)

门店地址：义乌市国际商贸城二区东，5号门一楼1街ED1-20053 20054

门店地址：义乌市全球数贸中心六区142号门3楼3单元2街73489

Exhibition hall address: No. 311, 3rd floor, Building 1, Shuangchuang Building, 1135 North Chouzhou Road, Yiwu City

Store address: No. 14418, 2nd Floor, Zone 2, Yiwu International Trade City (Connecting Body of Central Hall at Gate 33)

Store address: ED1 - 20053, 20054, 1st Street, 1st Floor, Gate 5, East of Zone 2, Yiwu International Trade City

Store address: No. 73489, 2nd Street, Unit 3, 3rd Floor, Gate 142, Zone 6, Yiwu Global Digital Trade Center



WeChat(Exhibition hall)



WeChat(14418)



WeChat(20053)



WhatsApp

SOFT STONE

软石一种节能环保低碳新材料  
Energy saving and environmental protection



## Flexible stone

Waterproof fireproof sunscreen

防水 防晒 与建筑同寿命

户外可用 终身质保

Outdoor availability Lifetime warranty



## 什么是软瓷(MCM)?

软瓷，也称为柔性瓷砖或柔石，并非真正的瓷，也不是瓷砖，它是一种新型的建筑装饰材料。由改性泥土为主要原料，运用特制的温控造型系统成型、烘烤、辐照交联而成的一种具有柔性的建筑装饰面材。

**Building exterior wall decoration material**

*Soft stone, also known as flexible ceramic tile or soft stone, is neither real stone nor ceramic tile. It is a new type of building decoration material. It is made of modified clay as the main raw material, and is formed, baked, irradiated and cross-linked using a special temperature-controlled molding system. It is a flexible building decoration surface material.*

## 零碳面材通过国际权威机构 BUREAU VERITAS 碳足迹、碳核查认证

### 产品简介

#### Product introduction

项目常规使用系列从质感、颜色、肌理方面进行全方位升级，细腻图案纹理，深邃又耐人寻味。具有尺寸大、轻质、柔韧可弯曲、施工方便、成本低的优势，室内、户外均可使用。

*Project Regular-use Series is fully upgraded from texture, color and pattern. The exquisite patterns and textures are original and rough, profound and thought-provoking. It has the advantages of large size, light weight, flexible and bendable, convenient installing and low cost, and can be used interior and exterior.*

1m<sup>2</sup>零碳面材碳排放为 1.02kg CO<sub>2</sub>e零碳面

材  
比陶瓷减少 **95.4%** CO<sub>2</sub>e

零碳面材  
比石材减少 **98.63%** CO<sub>2</sub>e

马赛克方块/Mosaic

常备规格/Regular size:

580\*1190mm 1190\*2980mm

厚度/Thickness: 4-8mm

不限于以下颜色

Not limited to the following colors



浅灰色/Light grey



白色/Pure White



米黄色/Beige yellow



深灰色/Dark grey



红色/Red



星月石/ Star moon stone

常备规格/Regular size: 600\*1200mm 1200\*3000mm

厚度/Thickness: 3-6mm

不限于以下颜色

Not limited to the following colors



米白色/Beige White



米黄色/Beige yellow



黑色/Black





7



8

阡陌石/Square line stone

常备规格/Regular size:

1200\*2900mm

厚度/Thickness: 4-9mm

不限于以下颜色

Not limited to the following colors



白色/Pure White



浅灰色/Light grey



深灰色/Dark grey



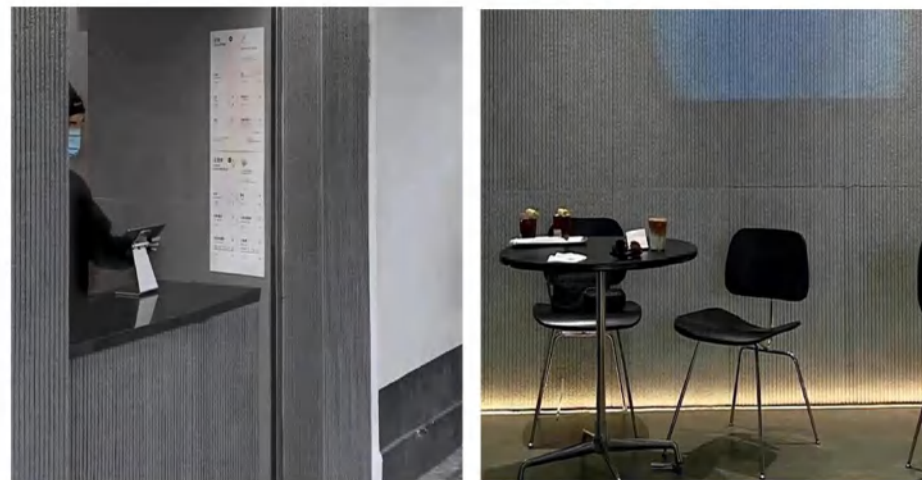
黑色/Black



红色/Red



11



12

新线石/Fine line stone

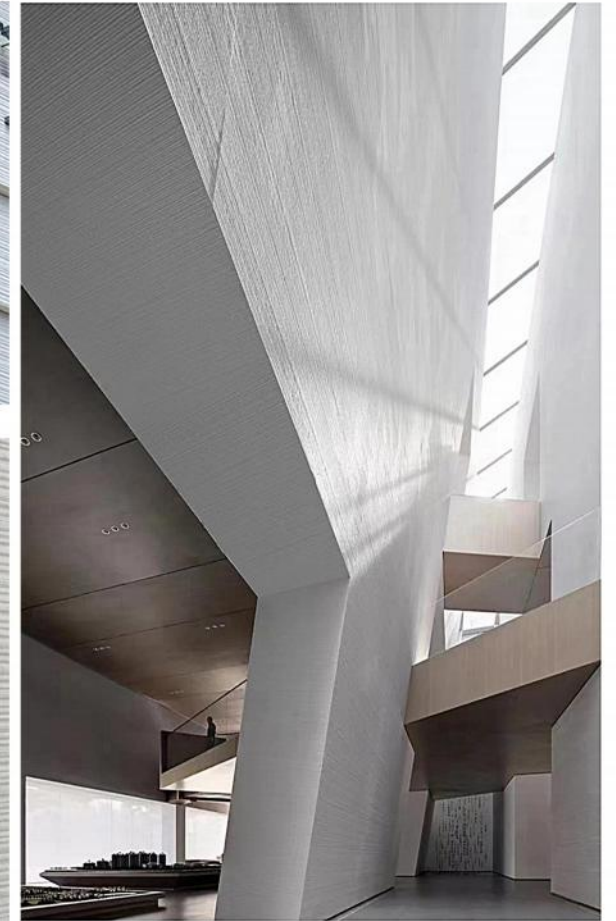
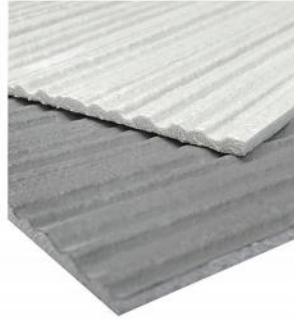
常备规格/Regular size:

600\*1200mm 1200\*2995mm

厚度/Thickness: 3-4mm

不限于以下颜色

Not limited to the following colors



米白色/Beige White



米黄色/Beige yellow



浅灰色/Light grey



浅灰色/Light grey



米白色/Beige White

竹纹/Bamboo

常备规格/Regular size:

1150\*2850mm

厚度/Thickness: 5-15mm

不限于以下颜色

Not limited to the following colors



土黄/Khaki



绿色/Green

粗纹线石/Line stone board

常备规格/Regular size:

600\*1200mm 1200\*3000mm

厚度/Thickness: 3-7mm

不限于以下颜色

Not limited to the following colors



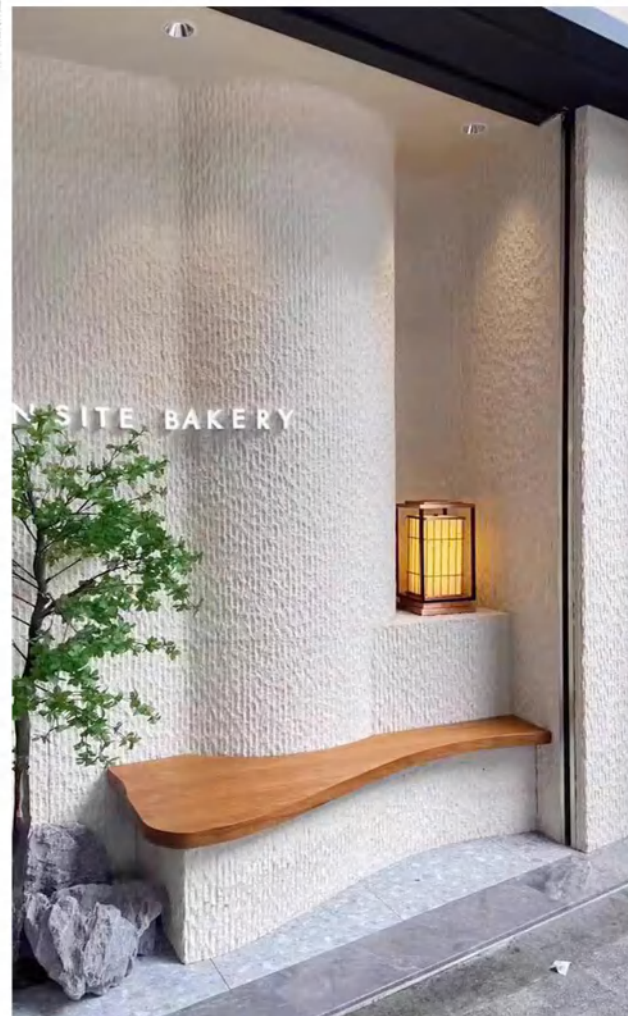
白色/Pure White



米黄色/Beige yellow



深灰色/Dark grey





英安岩/Dacite

常备规格/Regular size: 600\*1200mm 1200\*2950mm

厚度/Thickness: 3.5-4mm

不限于以下颜色

Not limited to the following colors



白色/Pure White



米黄色/Beige yellow



深灰色/Dark grey





白色/Pure White

火烧面/flamed surface

常备规格/Regular size:

600\*1200mm

厚度/Thickness: 2.5-4mm

不限于以下颜色

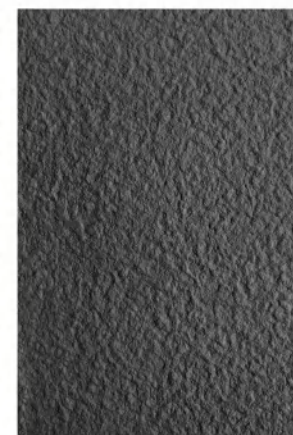
Not limited to the following colors



米黄色/Beige yellow



浅灰色/Light grey



深灰色/Dark grey

水泥浇筑板/Concrete board

常备规格/Regular size:

1180\*3000mm

厚度/Thickness: 3-5mm



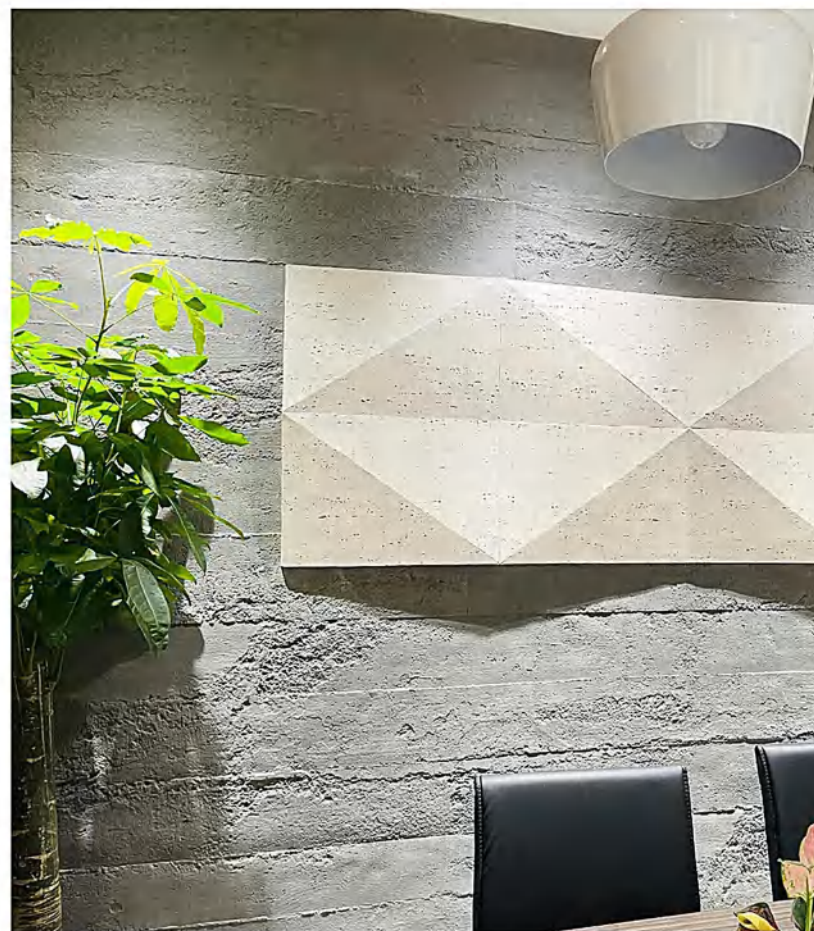
土黄/Khaki



深灰色/Dark grey



浅灰色/Light grey





W麻编/Weaving

常备规格/Regular size:

600\*1200mm 1190\*2950mm

厚度/Thickness: 5mm

不限于以下颜色

Not limited to the following colors



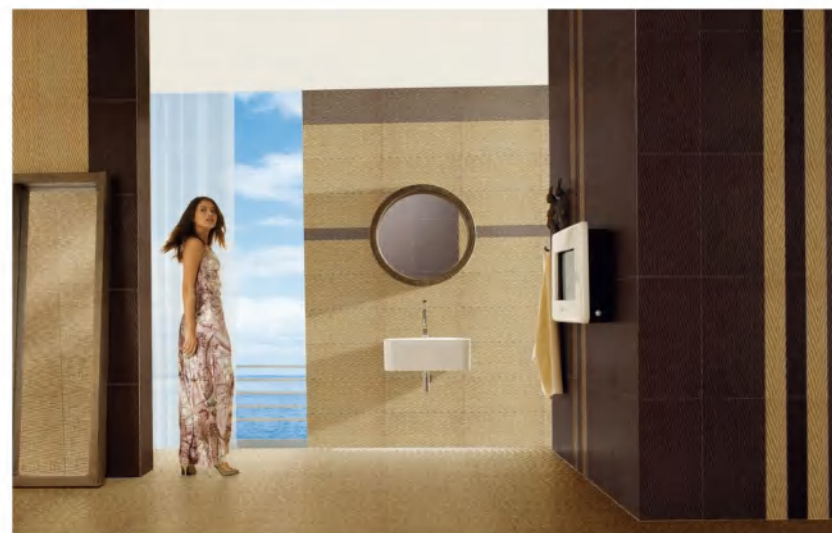
米黄色/Beige yellow



土黄/Khaki



深灰色/Dark grey



方块麻编/Lumpy Weave

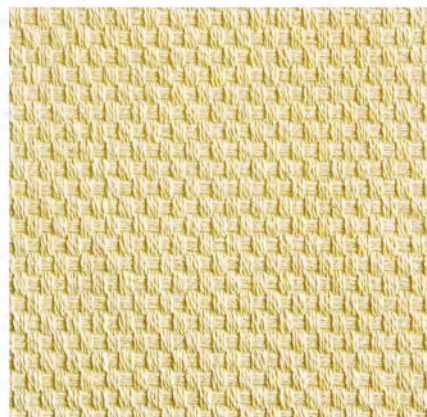
常备规格/Regular size:

600\*1200mm

厚度/Thickness: 2-3.5mm

不限于以下颜色

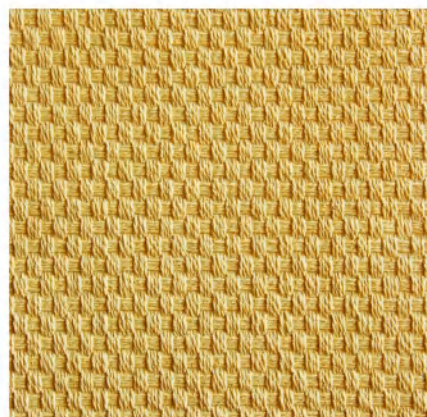
Not limited to the following colors



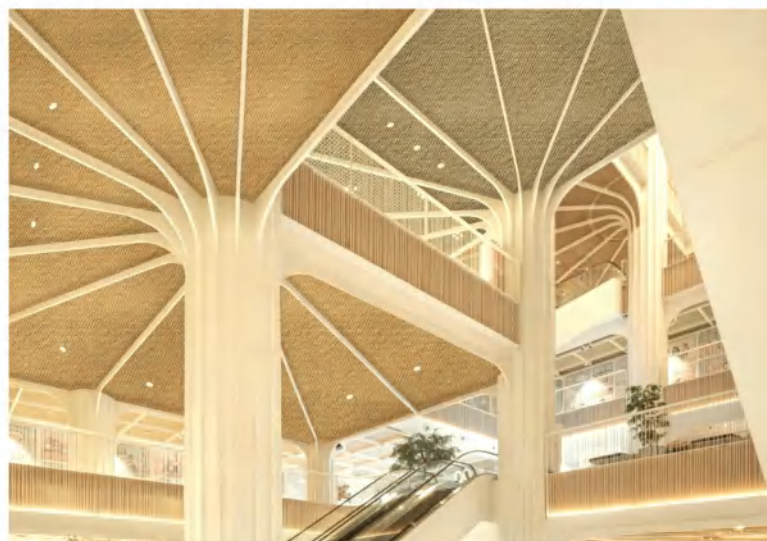
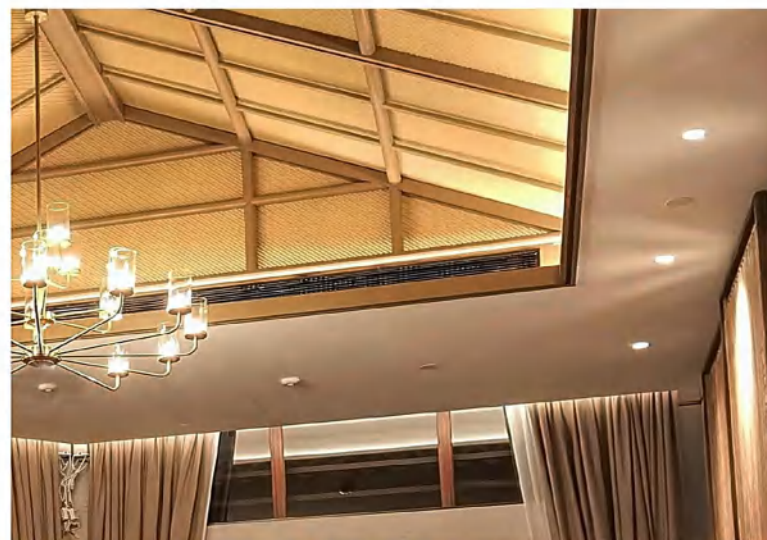
米黄色/Beige yellow



浅灰色/Light grey



黄色/yellow



水波纹板/Ripple board

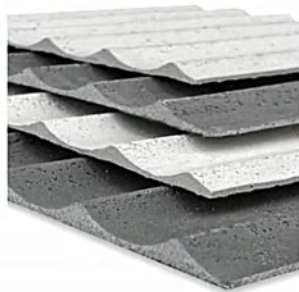
常备规格/Regular size:

1200\*600mm 1145\*2750mm

厚度/Thickness: 2-9mm

不限于以下颜色

Not limited to the following colors



白色/Pure White



米黄色/Beige yellow



深灰色/Dark grey



马赛克洞石/Mosaic Travertine

常备规格/Regular size:

580\*1190mm

厚度/Thickness: 2.5-8mm

不限于以下颜色

Not limited to the following colors



土黄/Khaki



米白色/Beige White



浅灰色/Light grey



黑色/Black



米黄色/Beige yellow



脉络石/Ripple board

常备规格/Regular size:

1200\*2900mm

厚度/Thickness: 4-11mm



不限于以下颜色

Not limited to the following colors



米白色/Beige White



土黄/Khaki



黑色/Black





松木纹/Pine wooden grain  
常备规格/Regular size: 600\*1200mm  
厚度/Thickness: 2.5-4mm



米黄色/Beige yellow



浅灰色/Light grey



黑色/Black

锯木板/Saw boaed

常备规格/Regular size:

1150\*3000mm

厚度/Thickness: 4-8mm

不限于以下颜色

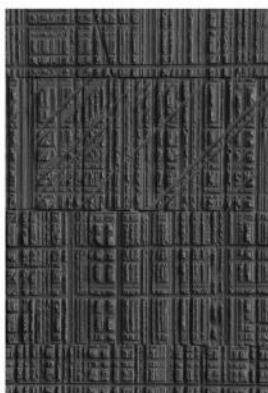
Not limited to the following colors



浅灰色/Light grey



红色/Red



深灰色/Dark grey



土黄/Khaki



木纹/Wood Grain

常备规格/Regular size:

1150\*3000mm

厚度/Thickness: 3-4mm

不限于以下颜色

Not limited to the following colors



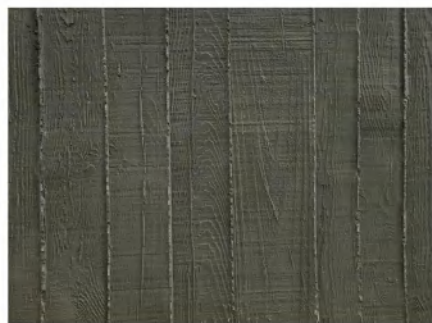
米白色/Beige White



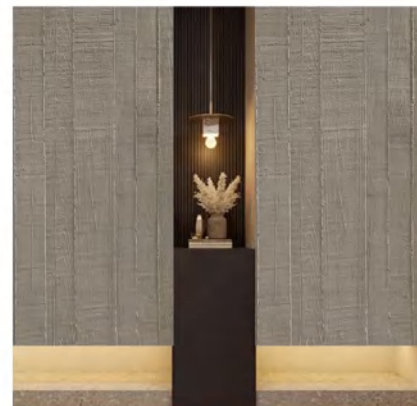
土黄/Khaki



浅灰色/Light grey



深灰色/Dark grey



中灰/Medium grey



洞石/Travertine

常备规格/Regular size:

600\*1200mm 1200\*3000mm

厚度/Thickness: 2-3mm

不限于以下颜色

Not limited to the following colors



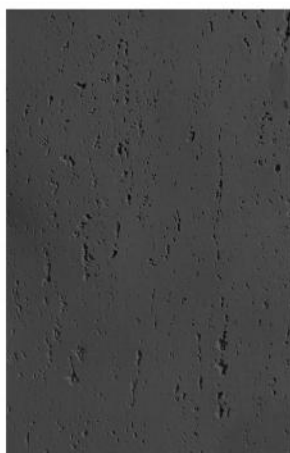
浅灰色/Light grey



米白色/Beige White



米黄色/Beige yellow



深灰色/Dark grey





47



DS-001灰色



DS-005象牙白



DS-006浅灰色



DS-008安格斯红



DS-009罗马黄



DS-010碳灰色

48



DS-012伊朗洞石



DS-013意大利红洞



DS-015皇家红洞



DS-017罗马洞



DS-018罗马黄



DS-021云白色



希腊洞石-安娜浅灰



希腊洞石-卡慕黄



大理石-尼罗暖灰



柚木-咖色



大杉纹木



裂纹橡木



原始古木



木纹-浅咖保利



木纹-柚栗



白松木



木纹-桃红



木纹-素咖



木纹-桃红保利

板岩/Slate

常备规格/Regular size: 600\*1200mm 1200\*2800mm

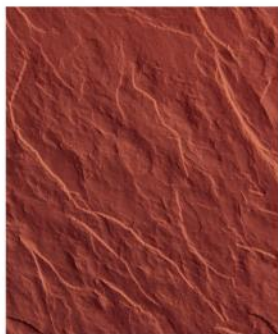
厚度/Thickness: 2-3.5mm



白色/Pure White



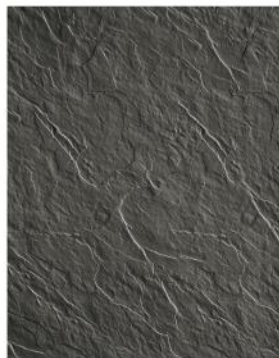
米黄色/Beige yellow



红色/Red



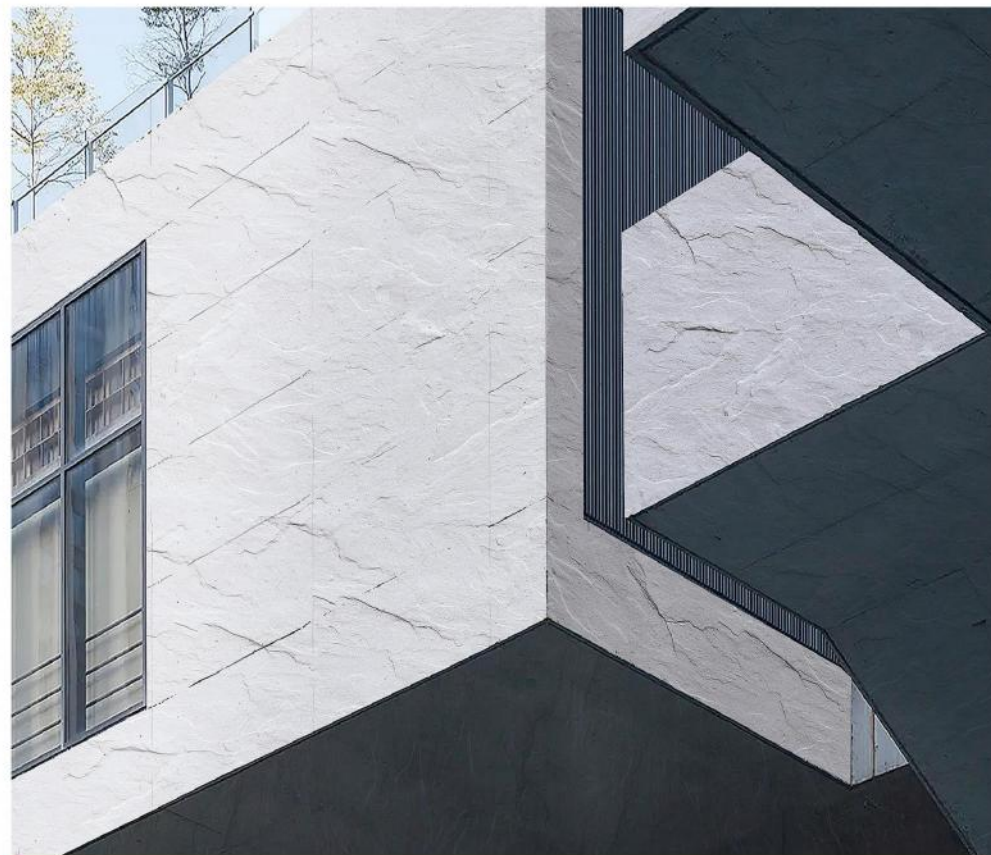
浅灰色/Light grey



深灰色/Dark grey



黑色/Black



不限于以下颜色

Not limited to the following colors



清水板-浮云



大理石-溪纱灰



天崖石-深灰



BY-609 云烟黄



BY-604 火山岩



天崖石-冷灰

斧开石/New Rock Cut Stone

常备规格/Regular size:

1100\*2950mm

厚度/Thickness: 3-10mm

不限于以下颜色

Not limited to the following colors



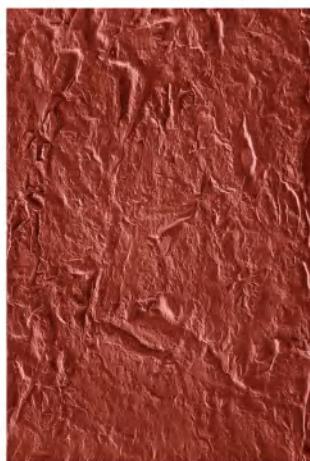
土黄/Khaki



浅灰色/Light grey  
57



深灰色/Dark grey



红色/Red





黑山岩/Black Mountain Rock

常备规格/Regular size:

1180\*3000mm

厚度/Thickness: 3-6mm

不限于以下颜色

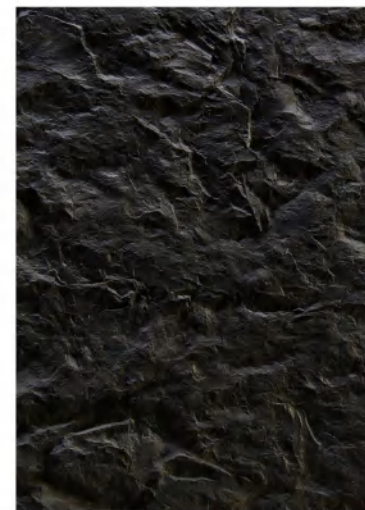
Not limited to the following colors



米白色/Beige White



浅灰色/Light grey



黑色/Black

细布纹/Cut Stone

常备规格/Regular size:

600\*1200mm

厚度/Thickness: 2.8-3mm

不限于以下颜色

Not limited to the following colors



土黄/Khaki



米白色/Beige White



浅灰色/Light grey



深灰色/Dark grey



柔质石材 可随意弯曲

防水防潮 A级防火

土墙砖/Wall Tiles

常备规格/Regular size:

1150\*2850mm

厚度/Thickness: 5-11mm

不限于以下颜色

Not limited to the following colors



米黄色/Beige yellow



土黄/Khaki



深灰色/Dark grey



夯土/Rammed Earth board

常备规格/Regular size:

600\*1200mm 1135\*2850mm

厚度/Thickness: 3.8-4mm

不限于以下颜色

Not limited to the following colors



米黄色/Beige yellow



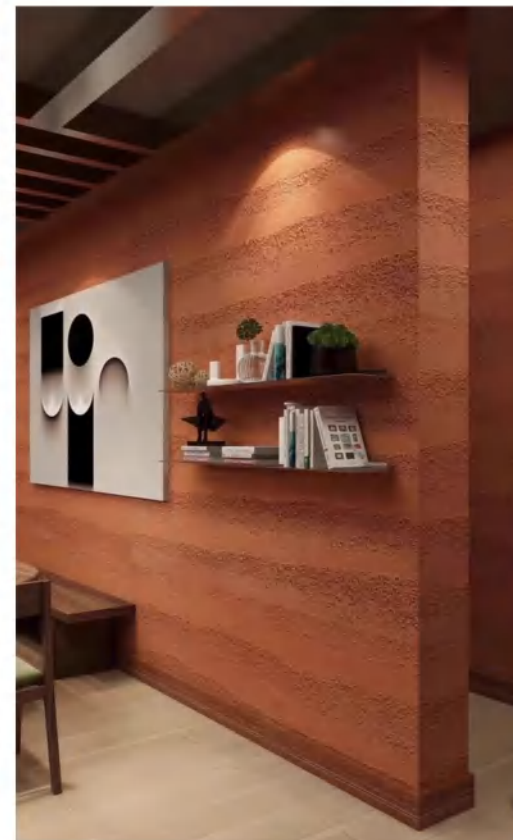
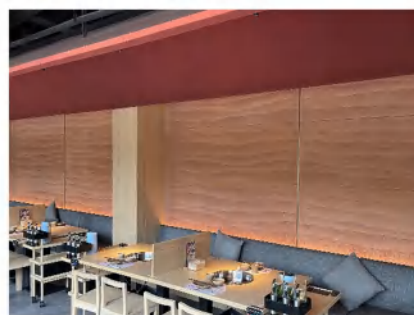
浅灰色/Light grey

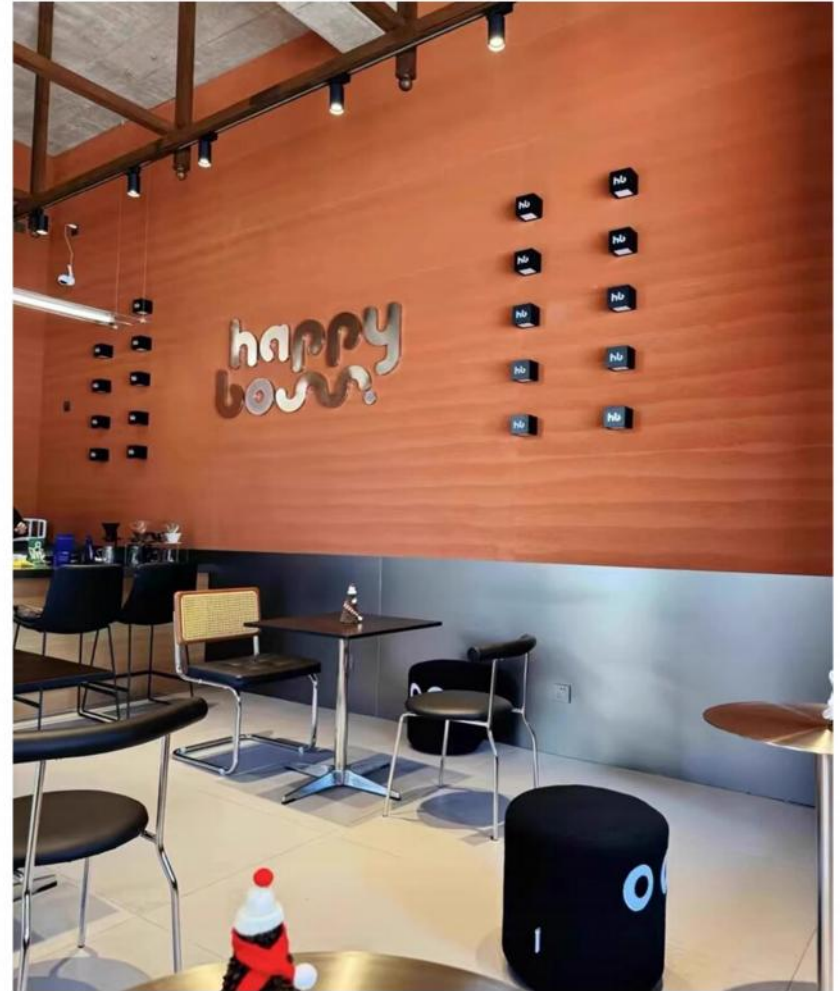
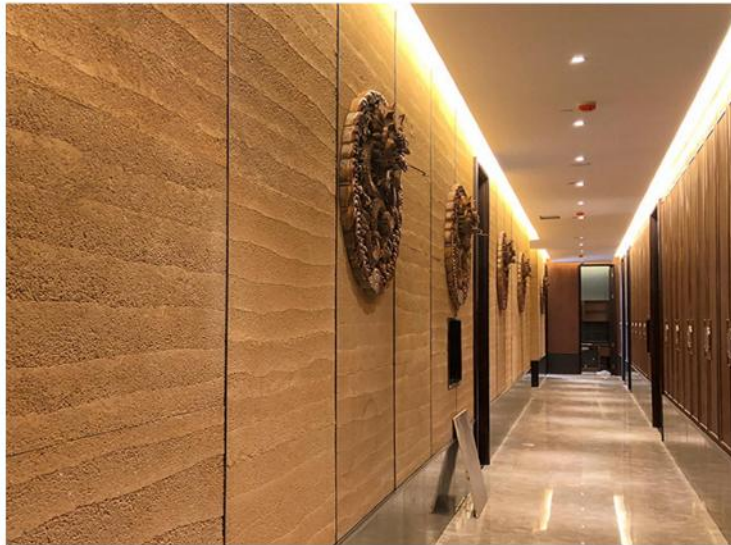


土黄/Khaki



红色/Red





红山岩/Red Mountain Rock

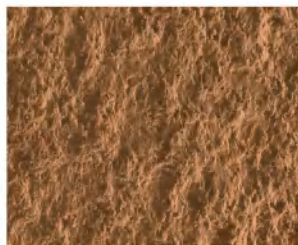
常备规格/Regular size:

1135\*2850mm

厚度/Thickness: 6-18mm

不限于以下颜色

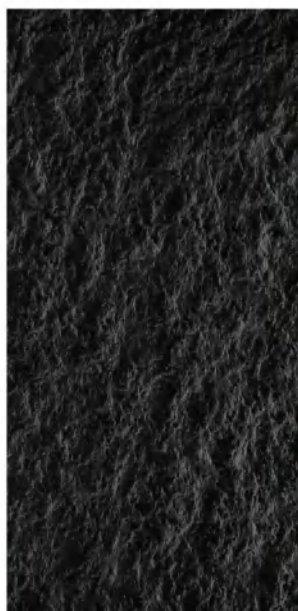
Not limited to the following colors



土黄/Khaki



浅灰色/Light grey



黑色/Black



红色/Red



碳化木/Charcoal Burnt Wood Board

常备规格/Regular size:

1160\*2980mm

厚度/Thickness: 3-4mm

不限于以下颜色

Not limited to the following colors



浅灰色/Light grey



黑色/Black



深灰色/Dark grey



流水石/Muretto stone

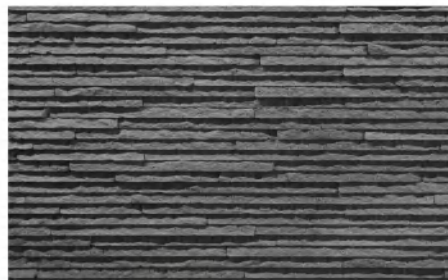
常备规格/Regular size:

600\*1200mm

厚度/Thickness: 2-6mm

不限于以下颜色

Not limited to the following colors



深灰色/Dark grey



米黄色/Beige yellow



土黄/Khaki



浅灰色/Light grey



黑色/Black





堆砌石/Strip Stone  
 常备规格/Regular size:  
 600\*1200mm  
 厚度/Thickness: 3-6mm

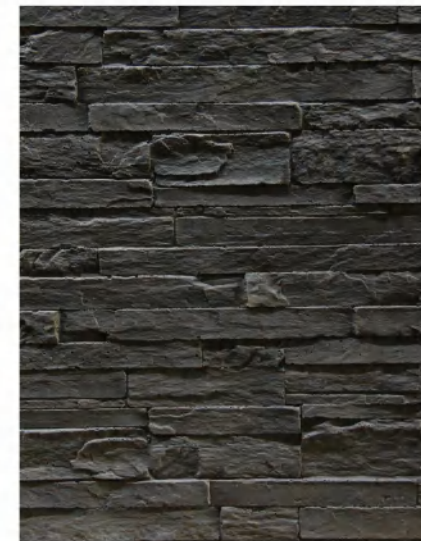
不限于以下颜色  
 Not limited to the following colors



土黄/Khaki



浅灰色/Light grey



深灰色/Dark grey

泡沫铝/Aluminum foam

常备规格/Regular size:

1100\*2750mm

厚度/Thickness: 3-5mm



黑色/ Black



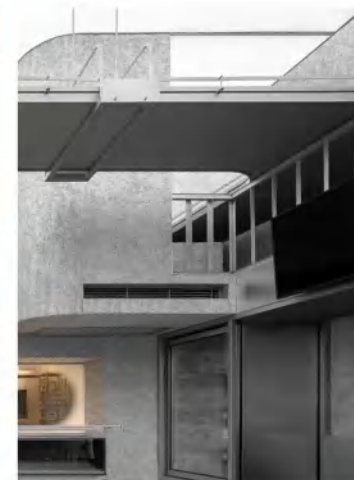
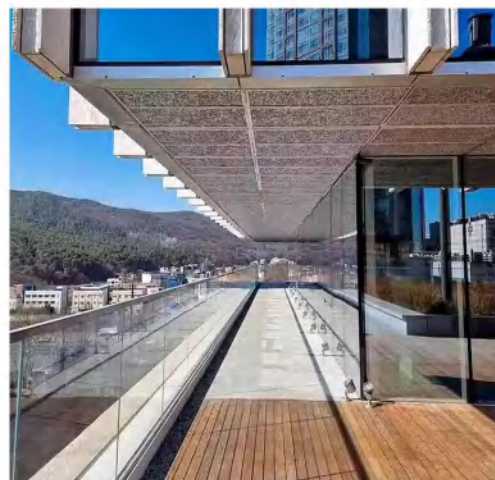
银色/ Argent



金色/ Golden

不限于以下颜色

Not limited to the following colors



脊线石/Ridged stone

常备规格/Regular size:

600\*1200mm 1200\*2990mm

厚度/Thickness: 3-7mm

不限于以下颜色

Not limited to the following colors



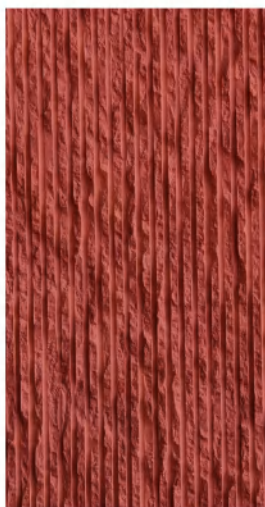
米黄色/Beige yellow



79 米白色/Beige White



浅灰色/Light grey



红色/Red



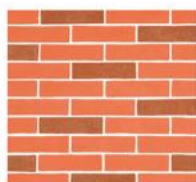


软瓷文化砖  
回归自然美

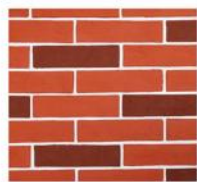
外墙软瓷砖具有  
轻·薄·柔·美·恒的特点  
施工简便 防火阻燃



W-20011



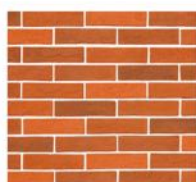
W-20015



W-20012



W-20018



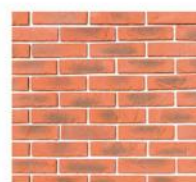
W-20021



W-20024



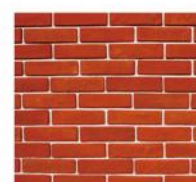
A-40011



A-40012



A-40013



A-40017



A-40014



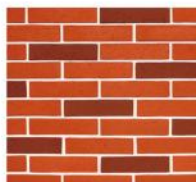
A-40015



A-40016



A-40018



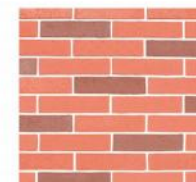
P-30011



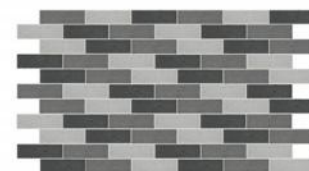
P-30012

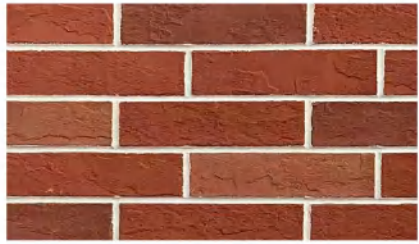


P-30013



P-30014

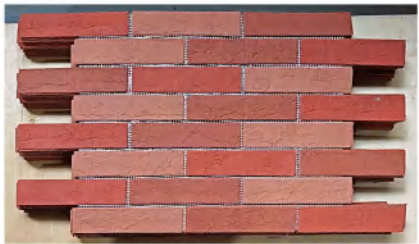




实物展示 / Physical Display



实物展示 / Physical Display



实物展示 / Physical Display



实物展示 / Physical Display



实物展示 / Physical Display



实物展示 / Physical Display

